

NEW 2016

optometron.de

Microscope Station

See more with the new **ZEISS** Optics

The new Microscope Station consists of high-quality components. Let us convince you with the following advantages.

The best for your eyes

A ZEISS stereo microscope offers the optimum of image quality. From overview to detailed view, shows the 5x zoom with detents everything you expect from a visualisation tool.

Stable & swiveling

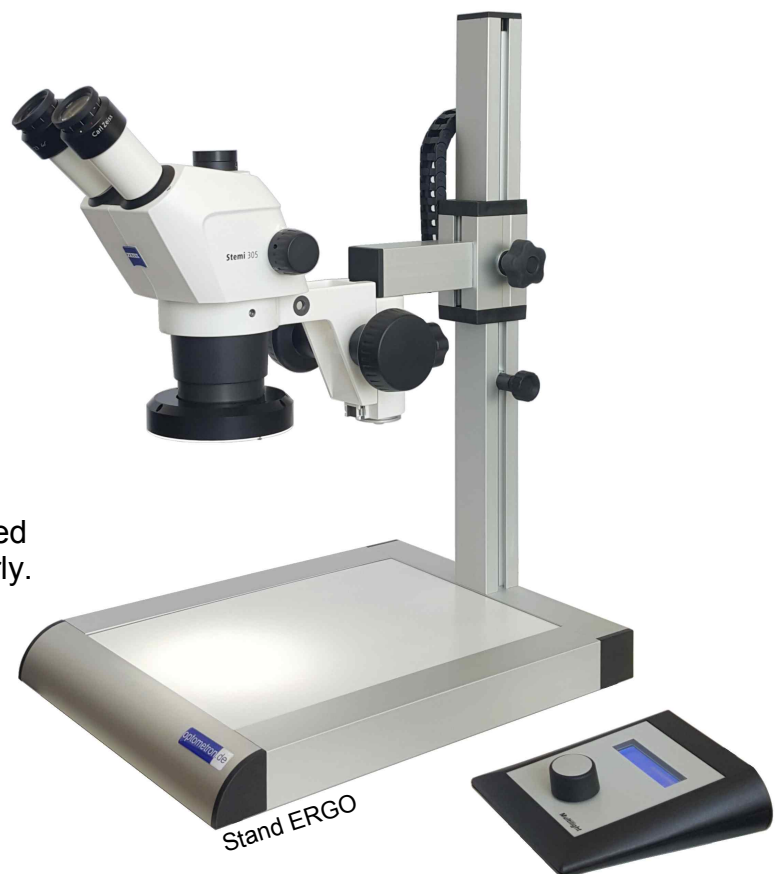
We offer two different stands:

ERGO with a base for repair, test or assembly work

MAX for very large samples

Brilliant light, Brilliant image

The LED ringlight is segmented and improves the image clearly. Compared to a conventional illumination system you get a much better image contrast. For glossy samples we recommend our Polarisation SET to reduce reflexes.



We show it to you

... always with an outstanding image quality. Each of our DOCU KITs (HDMI or USB 3.0) shows the images in FULL HD with 1920x1080 pixel and a min. refresh rate of 50 Hz. Smoothly and with no delay!

Did you know?

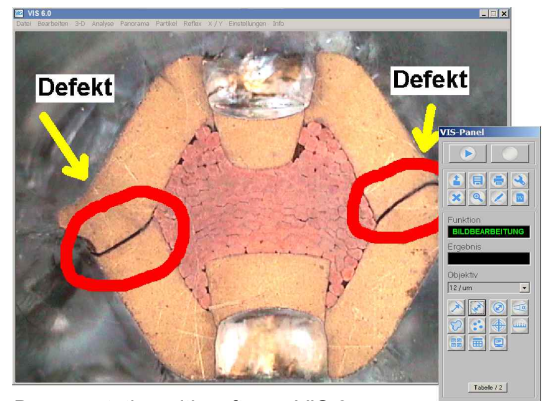
The HDMI 3036 camera is able to save images, movies and measures without a computer.

Uniquely but versatile

- Additionally lenses and eye pieces to fit your application
- X/Y tables for exact positioning
- Transmitted light sets
- Polarisation sets for reflex free images
- Software moduls for measuring



Stand MAX



Documentation with software VIS 6

The centerpiece - ZEISS STEMI

eyepiece		lens			
		0,5x WD=185mm	Standard 1,0x WD=110mm	1,5x WD=56mm	2,0x WD=43mm
10x	Mag./x	4 - 20	8 - 40	12 - 60	16 - 80
	FV/mm	11,5 - 57,5	5,8 - 28,8	3,8 - 19,2	2,9 - 14,4
16x	Mag./x	6,4 - 32	12,8 - 64x	20,6 - 102	25,6 - 128
	FV/mm	7,0 - 35	3,5 - 17,5	2,3 - 11,7	1,8 - 8,8

Mag. = optical magnification FV = filed of view

The components

Stereo microscope	Binokular ZEISS STEMI 305 with 5x Zoomfactor and detents Ocular angle 45°, 10x eyepiece, dust cover Option: Triocular with c-mount connector
Stand ERGO MAX	footprint 420x350mm, z-axis 500mm, boom with focus table clamp, swingable z-axis 500mm, boom (500mm) with focus
LED ringlight	ringlight LR-60/110 white (21000Lux) segmented, with focussing lens WD = 100 / 200mm controller NT-II, PC interface with Windows and Android Software
DOCU-KIT HDMI	- HD3036 1/3" CMOS color camera, res. 1920 x 1080, refresh rate 60Hz; - ACO 22" HDMI monitor, FULL HD, RGB and HDMI input
DOCU-KIT USB 3.0	- DFC-236 1/2,8" CMOS color camera, res. 1920 x 1080, refresh rate 54Hz; - documentation & analysis software VIS 6.4 for WIN-7/ 8 /10

Do you have any questions ?
We advise you and show the microscope
station in your company.